

LEASEHOLD



Block of Flats (EPC Rating: D)

37-39 DUKES LANE MANSIONS,
KENSINGTON, LONDON, W8 4JP

POA

£1

McLains
— ESTATE AGENCY —



6 Bedroom Block of Flats located in London

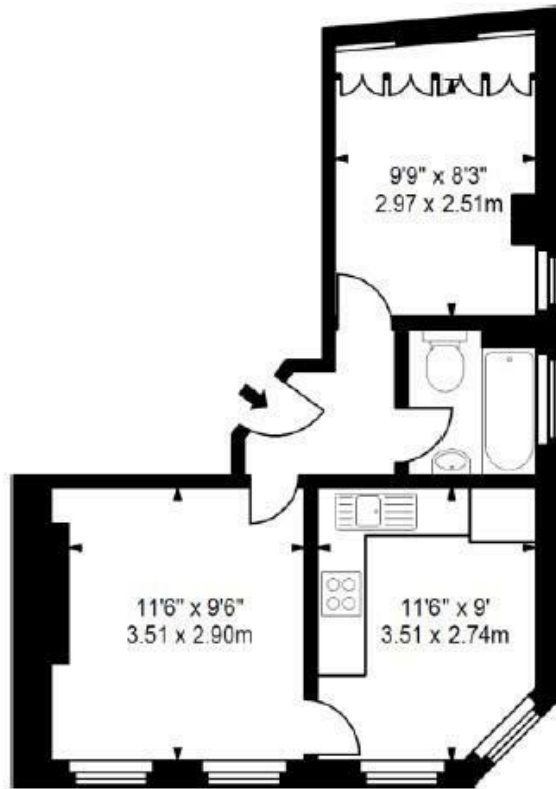
Located in the heart of Kensington, Dukes Lane Mansions presents a remarkable opportunity for discerning investors. This impressive block of flats boasts a generous total area of approximately 2,589 square feet, comprising six well-appointed one-bedroom apartments across the residential upper floors. Each unit is designed to offer comfort and style, having been recently refurbished to meet modern living standards.

The property is situated on a highly sought-after street, just a six-minute stroll from Kensington High Street Station, ensuring excellent transport links to the rest of London. With a long leasehold interest of around 975 years, this investment not only promises longevity but also stability in a prestigious location.

Currently, the property generates a total passing rent of approximately £175,416 per annum, making it an attractive proposition for those looking to expand their portfolio.

This leasehold is offered for sale by private treaty, providing a unique chance to acquire a prime residential investment in one of London's most desirable neighbourhoods. For those interested, the price is available upon application. This is an exceptional opportunity to secure a valuable asset in a thriving area, perfect for both seasoned investors and those new to the property market.



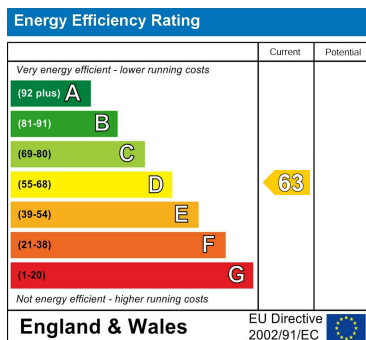


First Floor
Apartment 1

Council Tax Band

D

Energy Performance Graph



Call us on

01582 441225

info@mclains.co.uk

mclains.co.uk

Agents Note: Whilst every care has been taken to prepare these particulars, they are for guidance purposes only. All measurements are approximate and are for general guidance purposes only and whilst every care has been taken to ensure their accuracy, they should not be relied upon and potential buyers are advised to recheck the measurements.